



BRABOURGSTONE PROJECT  
KLESARSKA ŠKOLA PUČIŠĆA

Pučišća, 9th November 2015.



# Stonemasonry school - Information

- School was founded on 5 January 1909.
- manual manufacturing of stone mainly performed by means of manual wrought tools.
- Practical work is done on the local stone types of medium hard limestone (Veselje)
- school is a member of European Association of Building Crafts and Design - the association of stonemasons, stonemason schools, craft chambers and other expert teams (22 European states, the seat of the association is in Bruxelles)



# Programs - Information

- Programs
  - 4 year educational school for the profesion stonemason technician
  - 3 year craft school for the profesion stonemason



# Partnership in some EU projects (2012-2014)

Project	Topic	Type	Partners/Cooperators
KAMEN-STONE	Improvement in stone sector in two countries	IPA programme cross border cooperation Croatia – Bosnia and Herzegovina	Croatia chamber of economy- Split (RH), BIH chamber of economy, Chamber county of Dubrovnik and Development agency of Zadar county.
SAFEQU	Work in quarries on safety way	funded by the European Commission	The Finnish Natural Stone Association (Finland), Centro Tecnológico del Marmol (Spain), Saimaa University of Applied Sciences (Finland) Friedrich-Weinbrenner-Gewerbeschule (Germany)
STONEPLACING	Making standards and curriculum for stoneplacing for entirely EU	funded by a grant from the European Union Lifelong Learning Programme, Leonardo Develop of Innovation	Deutscher Naturwerkstein-Verband – DNV (Germany) Asesoramiento,– AtinServices (Spain) Centro Tecnológico del Mármol (Spain), European Association of Natural Stone - EUROROC (Germany) Institute de la Pierre – Les Compagnons du Devoir (France) Göinge Utbildningscenter (Sweden) S.C. Concept Consulting, SRL (Romania)



A photograph of the exterior of a building with classical architectural features. The building has a prominent entrance with two large columns supporting a pediment. The pediment contains the text 'KLESARSKA ŠKOLA'. Above the pediment is a balcony with a decorative railing. The sky is blue and clear.

KLESARSKA ŠKOLA

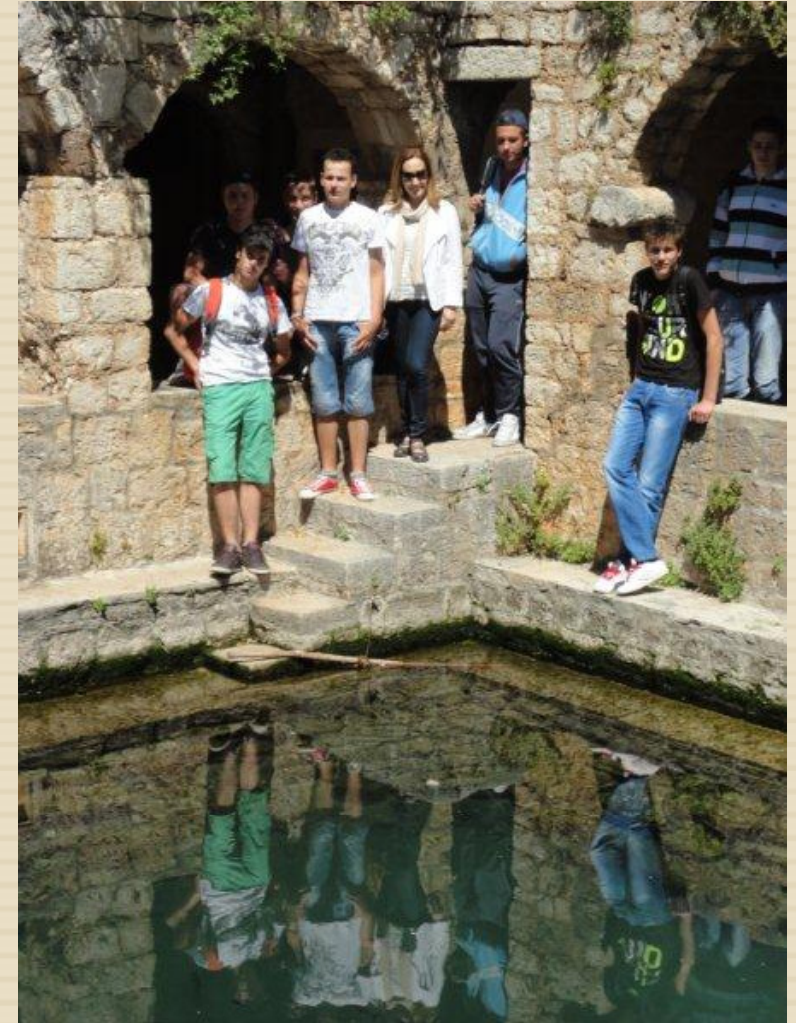
EXPERIENCES – TEAM  
PLANING AND DOING  
CLASSES



# Terrain class - Hvar



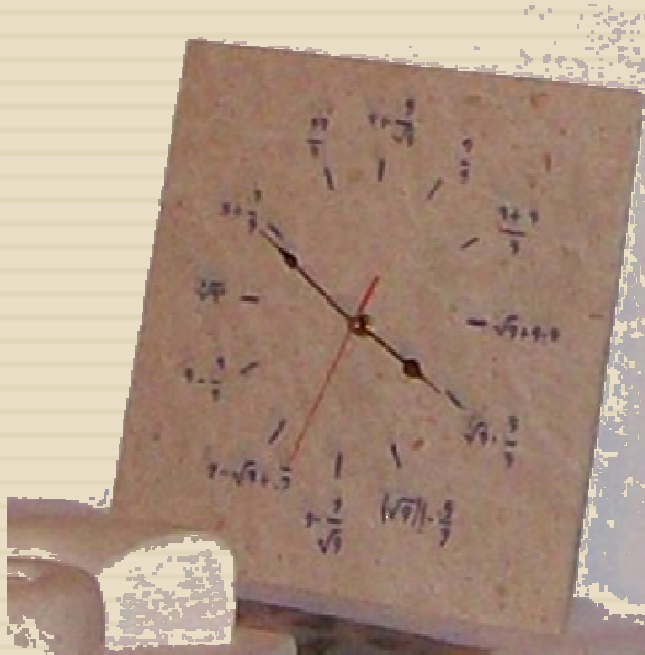
Visit of birthplace of famous croatian poet...  
Corelation among croatian language (croatian poets and writers), hystory (life style in diferent periods), arhitectural stiles, and geography.





# Night of mathematics

Corelation among mathematics, stonemasons, biology and physics







KLESARSKA ŠKOLA

# PROJECT – TOPICS AND METHODOLOGIES



# Locating relevant artefacts and sites

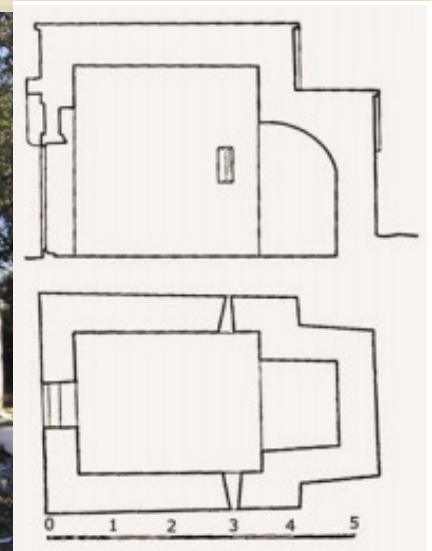
- Writed documents – life style and law in the relevant period



- Phisycal artefacts – law and mores of that time



- Arhitecture -litle churches on Brač and bigger on the land



# Working methodology

## 9. Publication

Cooperation with  
restorers

External partners

## 1 Picking up the relevant information

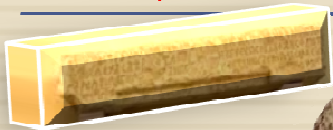
Publication, internet, ...

Information science

## 8. Making copy of Povaljski prag

Engraving the letters in stone

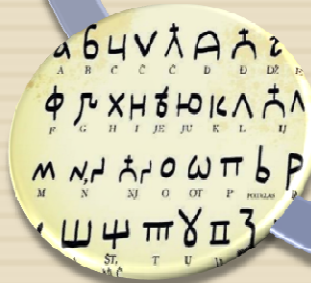
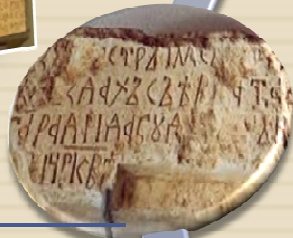
Practical work – school  
workshop



## 7. Physical artefacts

Terrain class – making  
casts

Modelling



## 6. Letter

Analyzing letter

Croatian language

Povaljska  
listina

## 5. Preromanesque law and mores

Written artefacts

Croatian language

## 2. Croats emperors

Life style

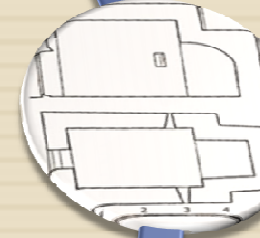
History



## 3. Characteristic top views of buildings

Especially churches

Civil engineering  
constructions &  
mathematics



## 4. Preromanesque architecture

Churches on Brač

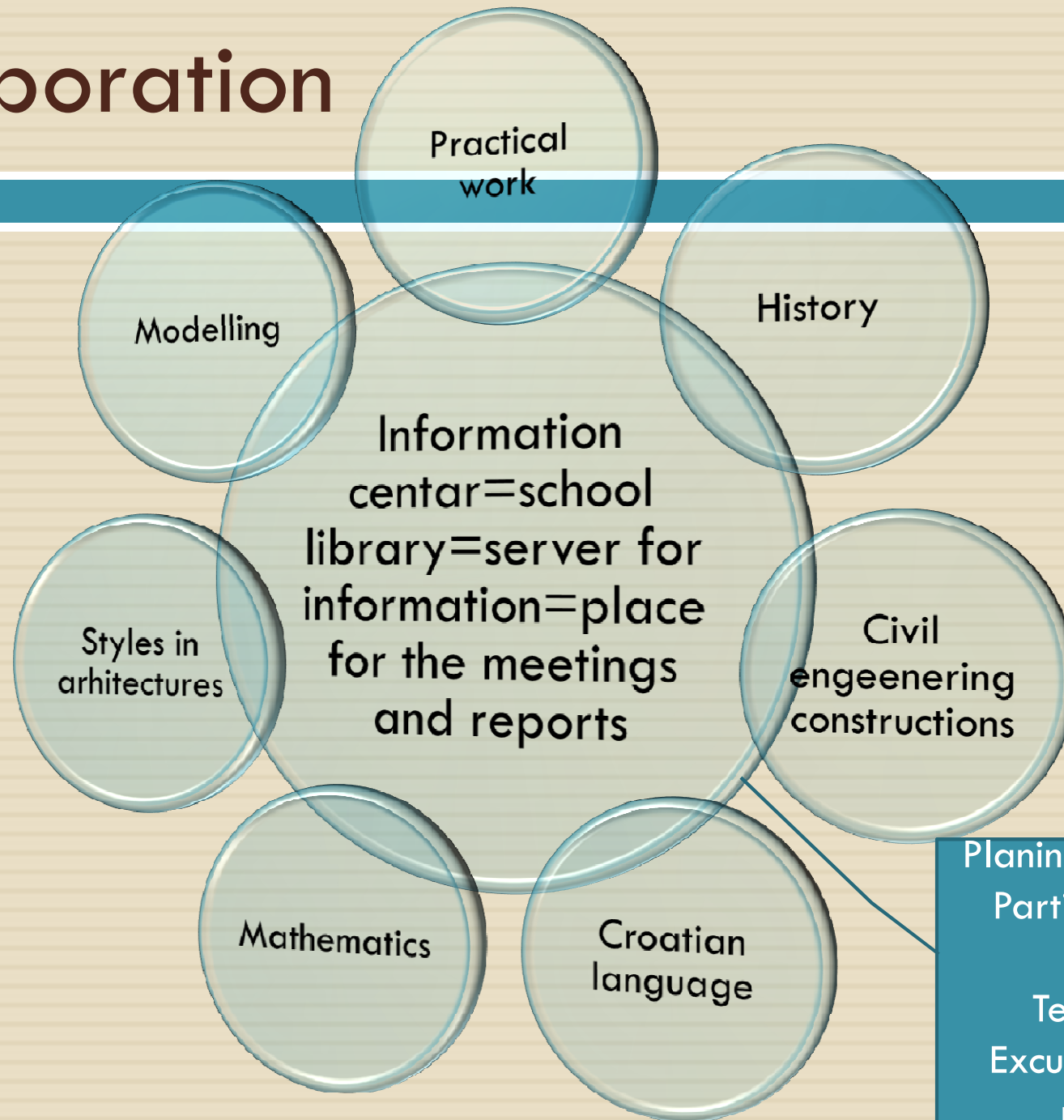
Styles in architecture



Pre  
romanesque  
period on the  
Ireland of  
Brac and in  
Dalmatia



# Colaboration



Planing and dating of:  
Particular and joint classes  
Terrain classes  
Excursion (churches, museums...)  
... and other activities...



KLESARSKA  
ŠKOLA

Thank you for your attention



KLESARSKA  
ŠKOLA